



www.retro-gear.com

Product Catalog

Your GUIDE Book

CONTENTS

PAGE 3

Inner Windshield A-Pillar Vertical Moldings

PAGE 4

Outer Windshield A-Pillar Vertical Moldings

PAGE 5-7

1957 Hood & Truck V's

PAGE 8

1957 Fender Louvers

PAGE 9

Bench Seat Relocation Brackets & Headlight Spring Tool

PAGE 10

Upper Windlace Retainers & Pinchweld Clips

PAGE 11-12

Emergency Brake Warning Light

PAGE 13

Tennessee Shaped License Palte

Please check website for the latest items and for the literature which changes frequently



**1955~1957 Chevrolet Convertible
Inner Windshield A-Pillar Vertical Moldings**

Reproduction Part

Replace your rusty or pitted moldings
with these new show quality parts

Part # M5004



Available Late September

1955~1957 Chevrolet Convertible
Outer Windshield A-Pillar Garnish Molding

Reproduction of Originals

Stainless Steel

Replace your missing or dented moldings with
this brand new hard to find item.

One set left & right side

Show quality

Part # M5005.



1957 Chevrolet Hood & Trunk V's



Reproduction of originals but so much better

Each hood and trunk V is crafted from a solid block of aluminium then highly polished and finally coated.

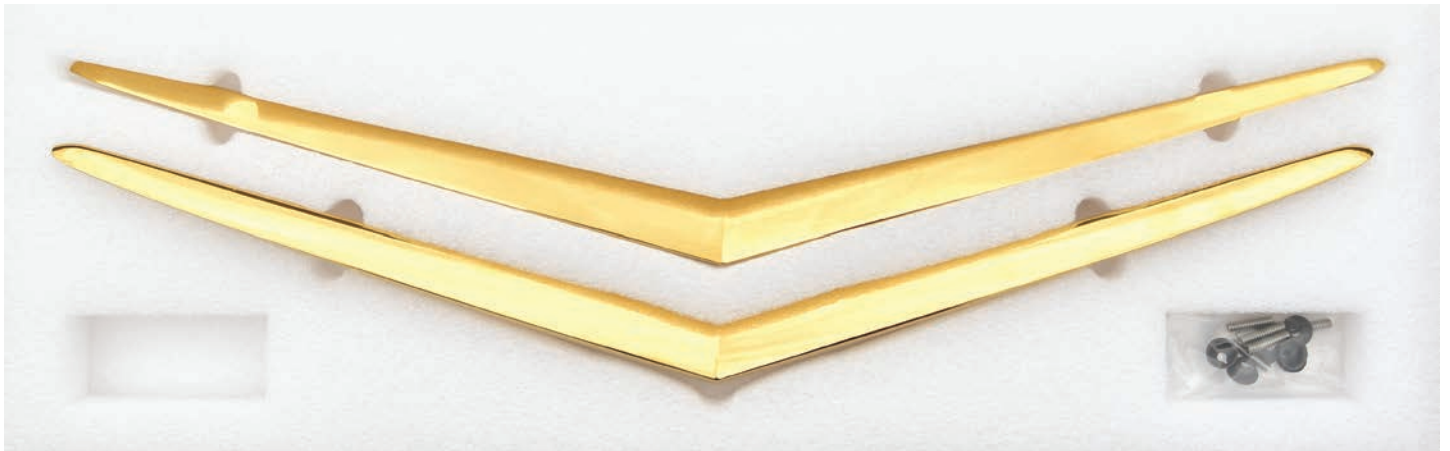
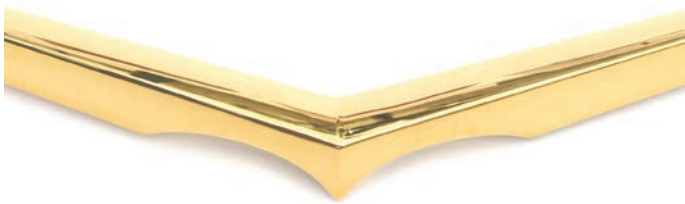
Gold V's use a specialized vacuum plating process to obtain a beautiful long lasting finish.

Replace your dull or pitted moldings with these brand new show quality pieces

Great looking finish available in Gold, Chrome or Black

Get the quality products your Chevrolet deserves

Part # M5006-G Sold as a set



1957 Chevrolet Hood & Trunk V's

Reproduction of originals but so much better

Each hood and trunk V is crafted from a solid block of aluminium then highly polished and finally coated.

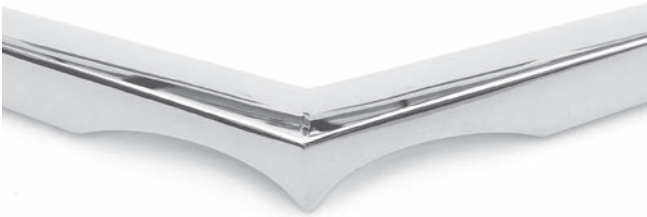
For those that do not prefer the luster finish of gold can go with the more traditional chrome finish

Replace your dull or pitted moldings with these brand new show quality pieces

Great looking finish available in Gold, Chrome or Black

Get the quality products your Chevrolet deserves

Part # M5006-C Sold as a set



1957 Chevrolet Hood & Trunk V's

Reproduction of originals but so much better

Each hood and trunk V is crafted from a solid block of aluminium then highly polished and finally coated.

The black version will be available in October 2024

For those that do not prefer the luster finish of gold or chrome can now choose a beautiful black finish

Replace your dull or pitted moldings with these brand new show quality pieces

Great looking finish available in Gold, Chrome or Black

Get the quality products your Chevrolet deserves

Part # M5006-B Sold as a set

The black version will be available in October 2024



1957 Chevrolet Fender Louvers (Set of 6)

Reproduction of originals but so much better

Each fender louver is crafted from a solid block of aluminium then highly polished and finally coated.

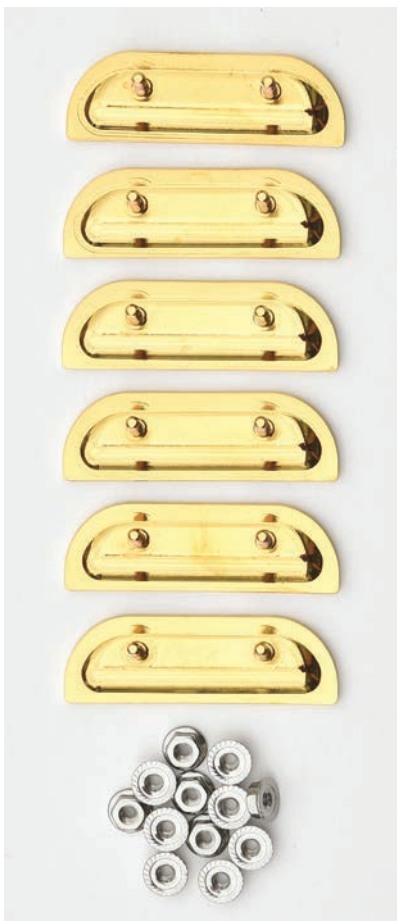
The studs on the back are made from part of the solid aluminum block so they will not break off

Replace your dull or pitted moldings with these brand new show quality pieces

Great looking finish available in Gold, Chrome or Black

Get the quality products your Chevrolet deserves

Part # M5007-G	Gold
# M5007-C	Chrome
# M5007-B	Black



The black version will be available in October 2024

Bench Seat Relocation Brackets fits 1955~1957 Chevrolet Cars



Fits all 1955~1957 Chevrolet cars with bench seats. Get an additional 3.5" of legroom with this bolt in item.

- Heavy duty aluminum construction
- Tooled
- Uses factory seat mounting locations
- Fits 2 door & 4 door front bench seats
- Threaded holes for ease of installation with no drilling
- Ships with grade 8 bolts

Part # I3002

Headlight Spring Tool



Reproduction of a 1950's Headlight Spring Tool

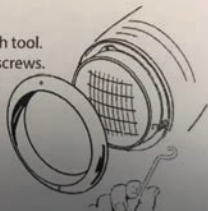
For use with headlamp replacement on 1955 through 1960 GM cars

Lays flat in your glove box

Part # A2501

Instructions:

1. Remove outer headlight bezel.
2. Locate spring near edge of lamp housing.
3. Unhook the spring from inner retaining ring with tool.
4. Slide lamp out from under the two adjustment screws.
5. Reverse the procedure to install new headlamp.

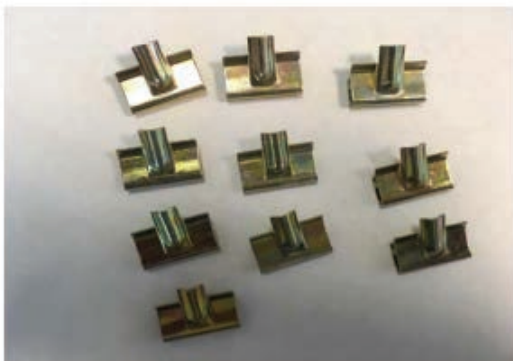




1955~1957 Chevrolet Upper Windlace Retainers
2-Door Hardtop & Convertibles

Replace your rusty or missing windlace guides
with this brand new item

Part # I3001



Chevrolet Pinchweld Molding Clip Set
1955~1957 Convertibles

These convertible top well surround molding clips
install at the pinchweld area around the base of the
convertible top

Part # C6001 Set (10 clips)

**1955~1957
Chevrolet Emergency Brake Warning Light**

New Reproduction Product

The front bezel, red jewel, housing and mounting bracket are reproductions of the original 1955~1956 version, the back end has been updated

This will work on a 1957 but does not look like the original

Complete kit includes, front bezel, red jewel, housing, spring, light, socket, mounting bracket, flasher, flasher harness, flasher bracket and the instructions.

The switch that goes on the brake assembly has been updated and now has two wires going to it vs one the original had for the 1955~1956 version. The 1957 always had two wires.

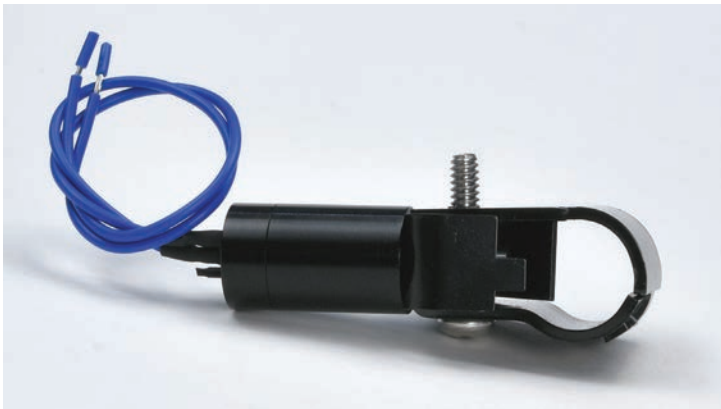
Simple wiring

Provides a flashing red light when the emergency brake is applied while the key is in the on position.

Helps prevent drive offs while the emergency brake is still applied

Part # E1005





Tennessee shaped license plate frame
(Shipped with chrome plated socket flat head bolts and stainless washers & nuts)

For 1936~1956 Tennessee license plates.

Frame is all metal, made on CNC machine then plated

Part # E1001



(License plate is not include, just for visual presentation)



RETRO-GEAR
4300 Reader Drive
Carrollton, Texas 75010
Phone: 214-960-4642
Fax: 214-960-4566